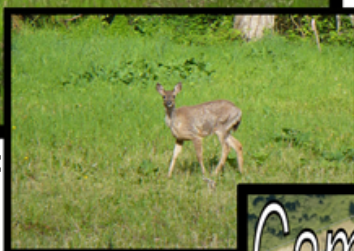


CAMPEN CREEK GREENWAY

Washougal Parks Department



History of the Campen Creek Greenway:

At over 40 acres, the Campen Creek Greenway is one of Washougal's largest masses of contiguous parklands. Eldridge Park is the foundational acquisition that began building this public greenway with a 1998 grant from the Clark County Conservation Futures - Legacy Lands program. The property was sold by the Kerr family as a namesake tribute to Dr. Horace L. Eldridge. This park will forever remain protected as the family wished for it.

Other properties added to the Campen Creek Greenway:

- Rolling Meadows Phase 4 open space (1998)
- Campen Creek Park: donated by the Campen Creek Villa sub-division (2004)
- Hartwood Park: Recreation & Conservation Office Washington Wildlife & Recreation Program Local Park grant (2008) and Legacy Lands grant (2010) & partial donation by the seller, Hartwood Homes LLC
- Rolling Meadows Phase 5 open space (2011)

The Cedar View Trail was constructed by volunteers, Eagle Scouts, City staff, and the Parks Foundation of Clark County and has become a popular recreational trail for area residents.

A 2013 Parks Foundation grant provided farm themed stand alone play elements in Hartwood Park.

A 2014 Washington Wildlife and Recreation Program Local Park grant also added a barn style play structure, picnic tables, parking improvements, and ADA accessibility.

Location: Trailheads @

Campen Creek Park: 1820 - 42nd Ct.

Hartwood Park*: 2251 - 49th Street

Eldridge Park*: 2211 - 49th Street

**shared off-street parking*

Amenities:

Cedar View Trail, benches, picnic tables, farm themed playground, community orchard.

Recreation Opportunities:

This Greenway provides views of distant Oregon hills and territorial vistas of surrounding Washougal. This system of parks provides diverse ecosystems, from forest to field, ponds, wetlands, and streams. The site is a popular haven for deer and other wildlife (no hunting or off-leash dogs allowed).

