

SCHMID FAMILY PARK

The City of Washougal is beginning the master planning process for **Schmid Family Park**, a 17.8-acre site located near the bend of the Washougal River. This special property was acquired with funding support from Clark County's Conservation Futures Program and the Washington State Recreation and Conservation Office to *protect its natural features* and *provide future park space* for Washougal residents. The site includes two distinct zones:

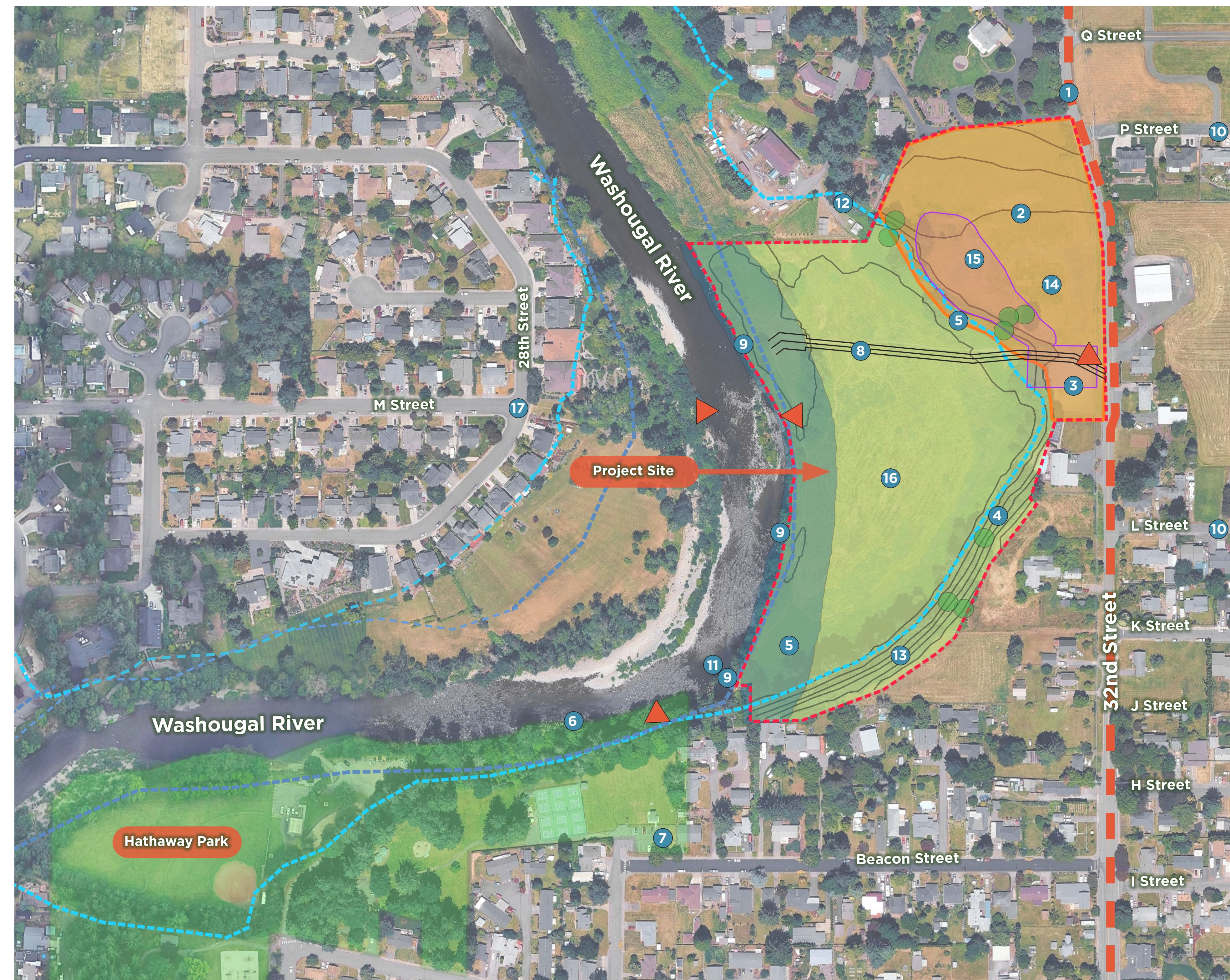
- **The Lower Park Area:** 13-acres - includes a riverfront and floodplain offering scenic views, opportunities for passive recreation, quiet enjoyment of nature, and natural open space.
- **The Upper Park Area:** 5-acres - this developable area could include gathering spaces, play features, or multi-use community areas.

GUIDING PRINCIPLES

Schmid Family Park will be a *vibrant, inclusive destination* that deepens Washougal's connection to its people, its landscape, and its heritage. By thoughtfully blending nature, art, and history, the park will provide welcoming spaces for play, gathering, and quiet reflection. Designed for all ages and abilities, it will be a place to learn, explore, and celebrate—fostering creativity, community, and meaningful experiences for generations to come. The areas could include gathering spaces, play features, or multi-use community areas.

LEGEND

- 32nd Street Improvements
- Floodway Fringe
- High Water Boundary
- ▲ Access Points
- Schmid Park Site
- Vapor Intrusion Restriction Area
- Groundwater Intrusion Restriction Area
- Riparian Buffer
- Oregon Oak Trees
- ① 32nd Street Widening Project
- ② Elevated upper section of park
- ③ Gravel parking area
- ④ Steep slopes
- ⑤ River viewpoint from park
- ⑥ Potential trail connection to Hathaway Park
- ⑦ Potential shared parking at Hathaway Park
- ⑧ Existing utility easement
- ⑨ River Access Points
- ⑩ Connection to nearby school
- ⑪ The Greens swimming hole
- ⑫ Flood fringe line on site
- ⑬ Evergreen tree buffer on slope
- ⑭ Vapor intrusion restriction area
- ⑮ Groundwater intrusion restriction area
- ⑯ Lower section of park in flood plain
- ⑰ Potential connection to neighborhood



Celebrate Washougal's Heritage

Honor the cultural, ecological, and historical significance of the land while creating a park that serves as a living legacy.



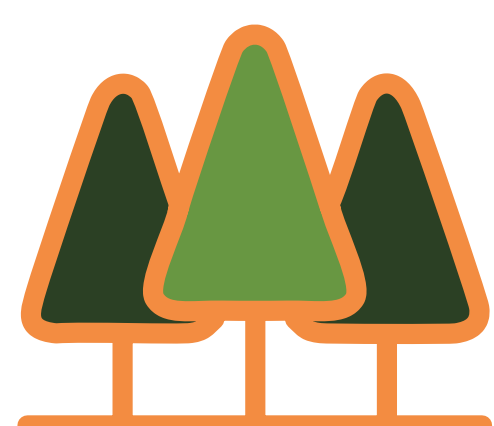
Design for ALL

Ensure the park is welcoming, inclusive, and accessible to people of all ages, backgrounds, and abilities.



Protect and Enhance the Land

Restore natural systems, support habitat, and embrace sustainable practices that preserve the park's beauty and function over time.



Connect with Nature

Inspire curiosity and stewardship through opportunities to experience the Washougal River, native landscapes, and local wildlife.



Foster Community and Creativity

Create flexible, engaging spaces that support play, arts, education, and community gathering.

SCHMID FAMILY PARK

CONCEPT 1



- Medium-sized carry-in boat launch
- Constructed wetland enhancement area
- 69-Stall parking lot
- Restroom building
- Multipurpose picnic shelter
- Terraced lawn seating
- Community sculpture/art garden

CONCEPT 2



- Larger boat launch/staging area
- 31-Stall parking lot
- Restroom building
- Larger picnic shelter
- Formalized grand lawn
- Linear rain garden
- Nature/traditional play
- Art garden/exploration trail

CONCEPT 3



- River overlooks
- Elevated boardwalks
- Outdoor fitness stations
- 85-Stall parking lot
- Medium-sized picnic shelter
- Rain garden
- Nature/traditional play
- Restroom facility

