

Park Board Meeting

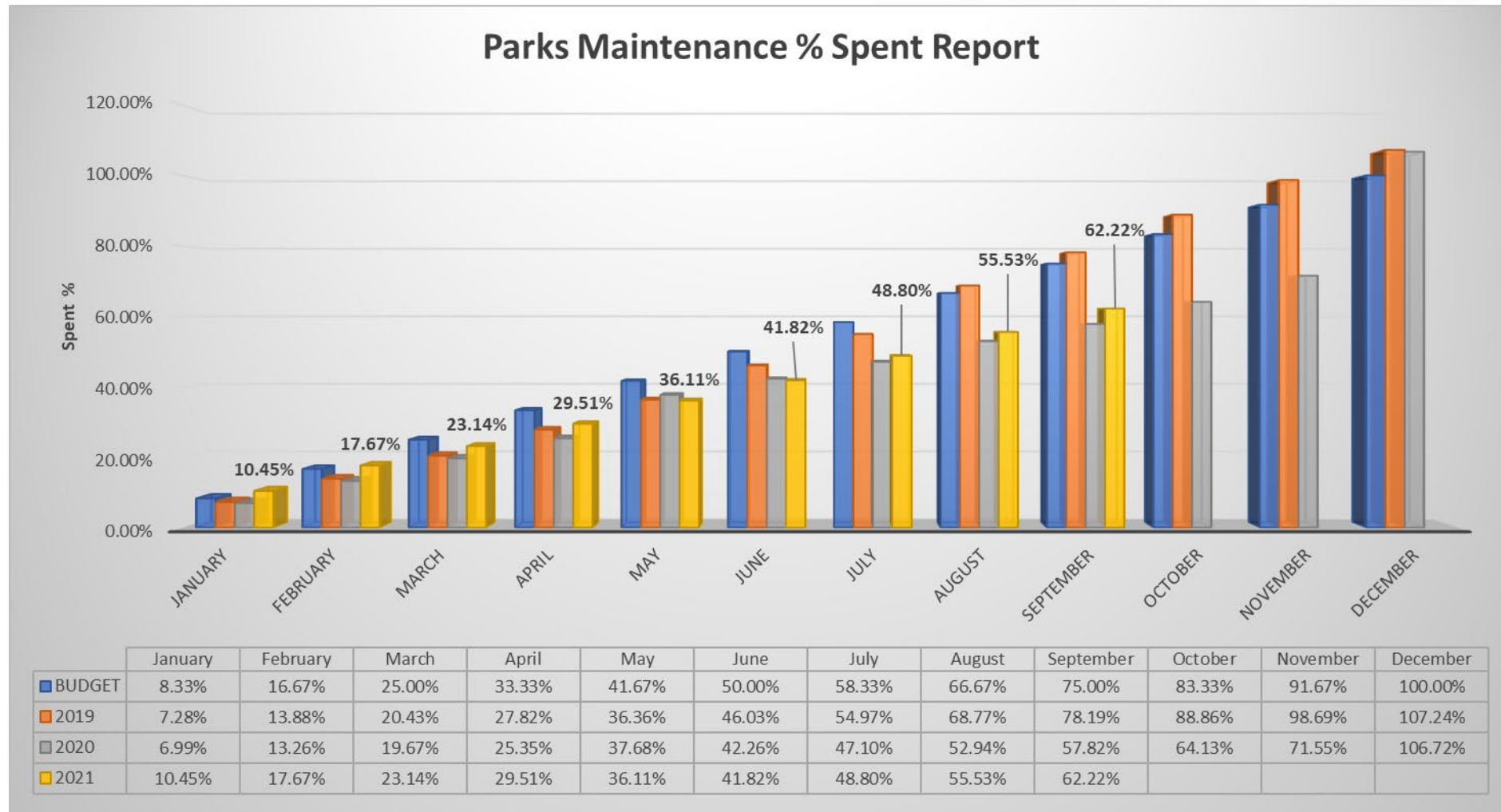
Presented by Michelle Wright



City of Washougal

Our mission is to provide leadership and effective, fiscally responsible services that achieve our community's vision.

Parks Maintenance Budget





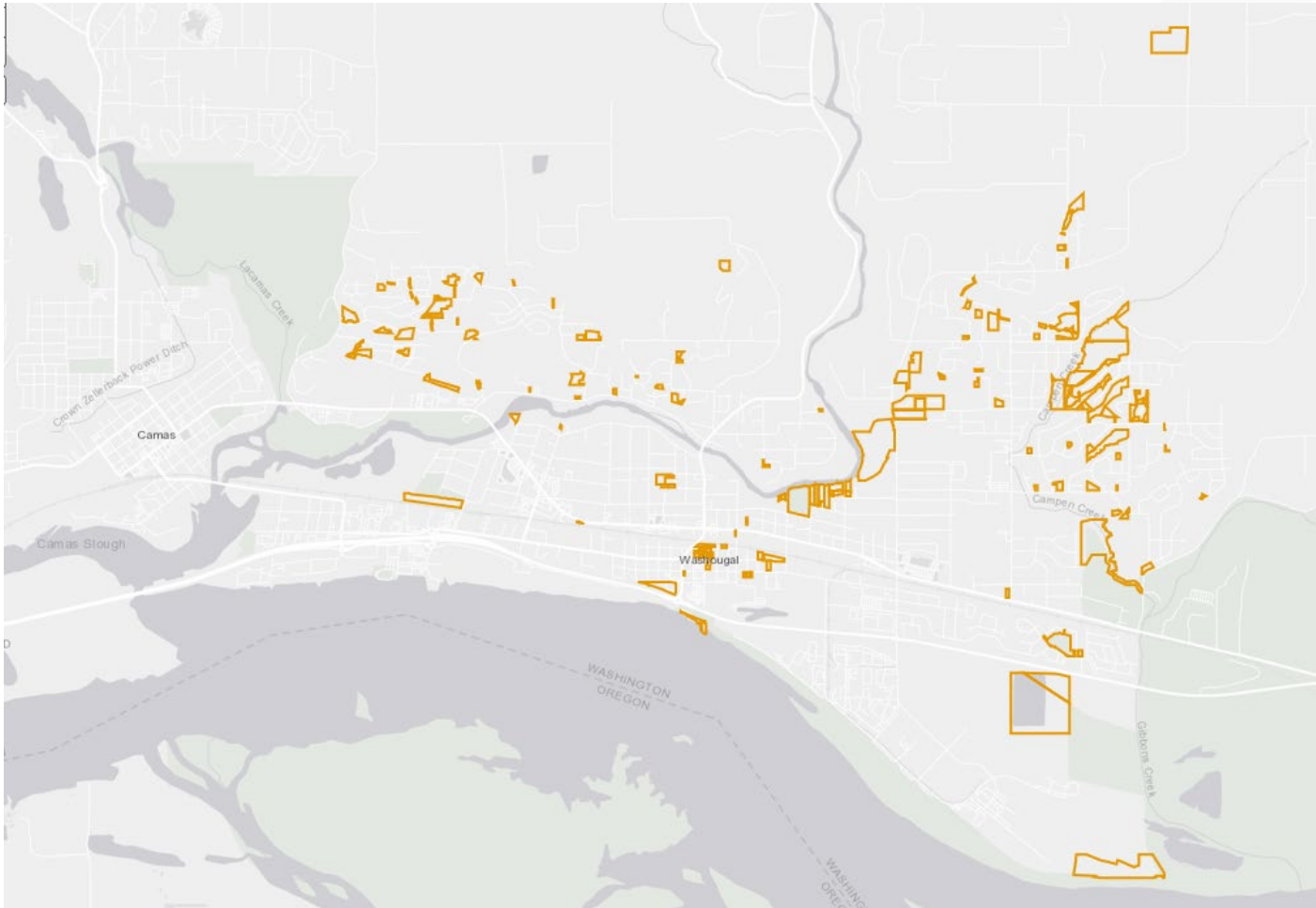
Park Board Budget-\$2,000

- Hartwood Trees
- Kerr Park Trees
- New benches at Lower Hathaway baseball field
- Recreation needs
- Etc....

**Park Board Elections
hold off till we fill
vacancy (vacancies)**

City-owned properties

[City-owned Properties \(arcgis.com\)](https://arcgis.com)

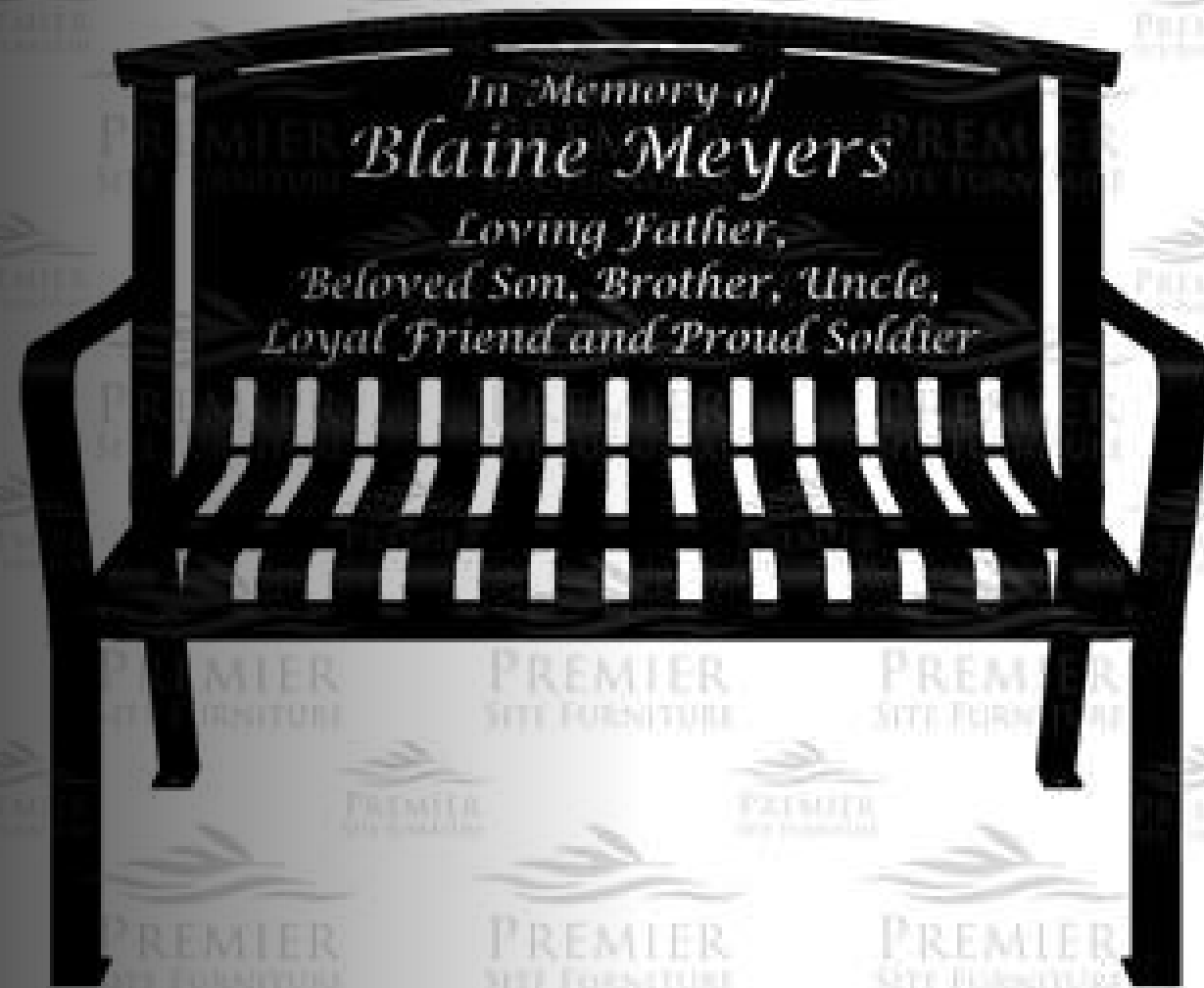


Couple of things regarding this link:

- Potential surplus properties
- Potential dog park

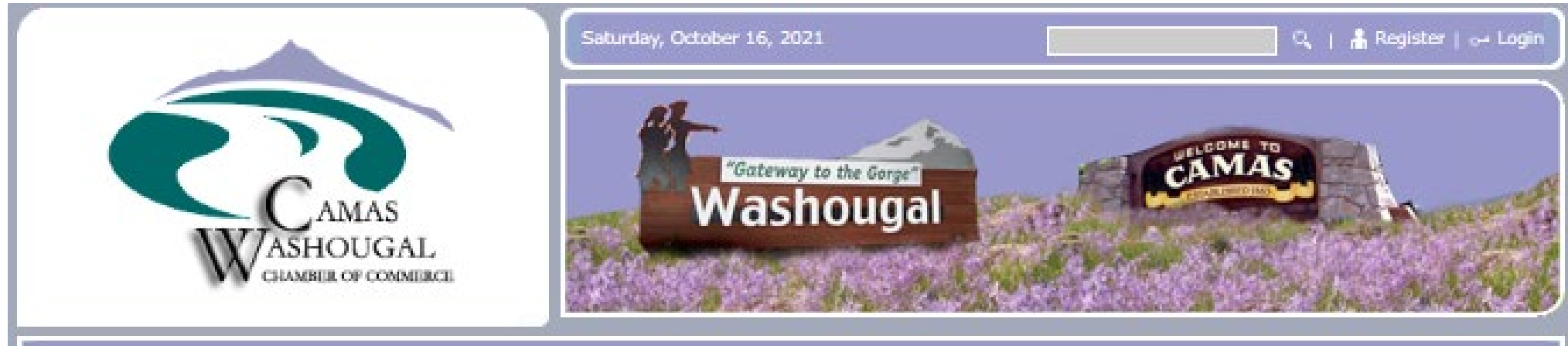
4' Arched Maple

Request for memorial bench at Lower Hathaway



PROPERTY AND CONFIDENTIAL

THE INFORMATION CONTAINED IN THIS DRAWING IS THE SOLE



Chamber Lunch November 18th

Agenda items is City of Camas/Washougal Parks Master Plans and projects update to the community

City of Washougal Ambassador

***Stewardship** definition:

The responsible overseeing and protection of something considered worth caring for and preserving.

What's my role?

Visit the park at provide feedback.

The key is to enjoy your park!



Adopt A Park

- **What does it mean to adopt a park?**
- Adopting a park is a great way for local groups, individuals or organizations to get involved in the community. The primary goal for park adopters is to help keep the parks safe and clean. This can be done through individual park patrols, work parties, or large community events.
- **What is required to adopt a park?**
- Fill out an Adopt-a-Park Application
- Set up a meeting with the Volunteer Coordinator to discuss adoption details and create a park work plan based on adopted park and group needs
- Complete weekly/monthly tasks (less required in winter months)
- Complete at least two (2) service projects each year

DO WE WANT TO
TAKE THIS TO
COUNCIL?



The image shows a blue-bordered sign for Hillsboro Parks & Recreation's Adopt-a-Park program. At the top is the Hillsboro logo, which consists of a stylized 'H' in green and blue, followed by the word 'Hillsboro' in blue and 'Parks & Recreation' in green. Below the logo, the text 'Adopt-a-Park' is written in a large, bold, black font. Underneath that, in a smaller blue font, it says 'This community park is adopted by:'. Below this text is a large, light gray rectangular box with the text 'Your Name Here' in a black font. At the bottom of the sign, in a small blue font, it says 'Thank you for helping to enhance Hillsboro Parks!'.

Hillsboro
Parks & Recreation

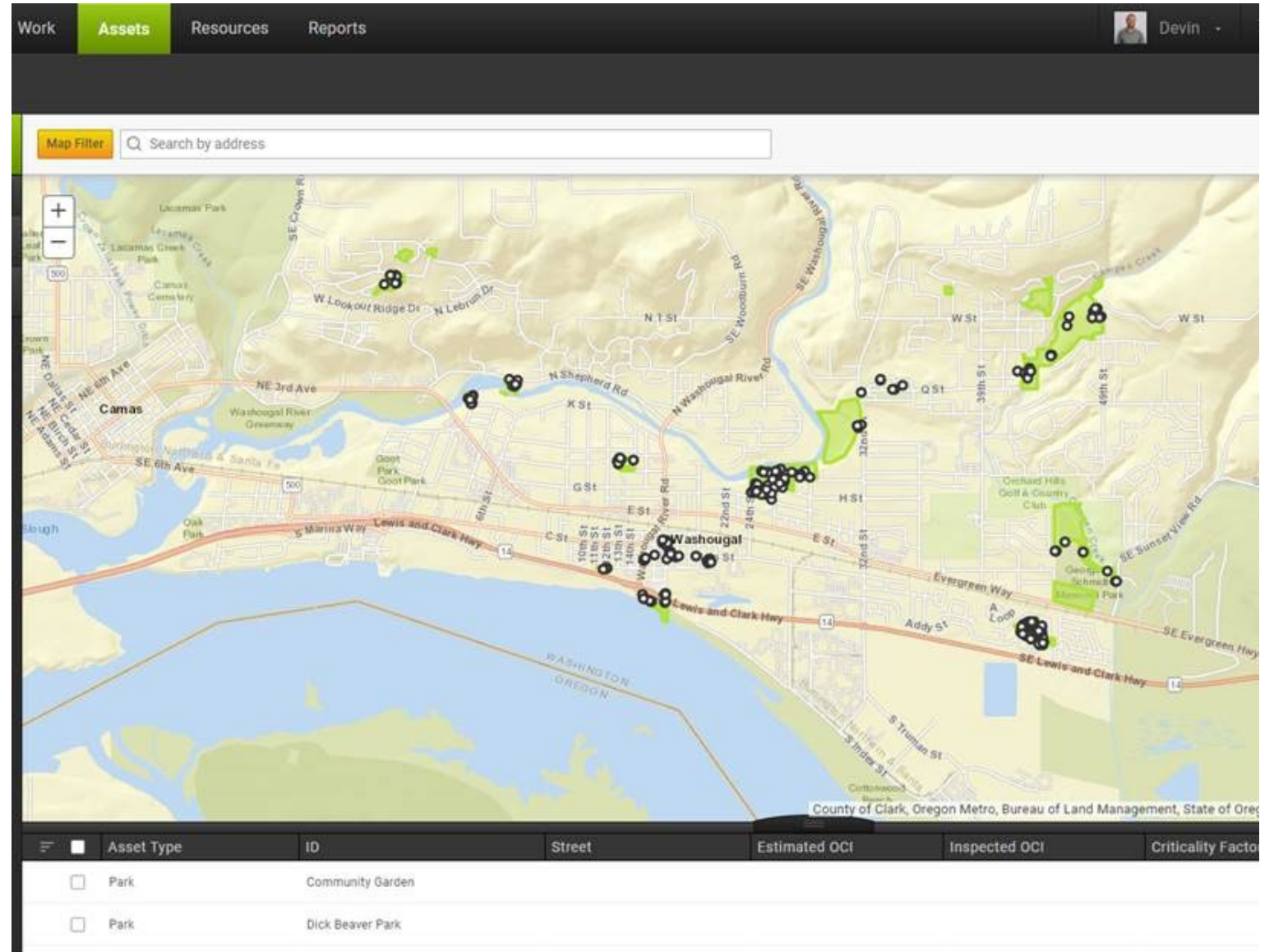
Adopt-a-Park

This community park is adopted by:

Your Name Here

Thank you for helping to enhance
Hillsboro Parks!

Asset Management for Parks




Elizabeth Park

WorkAssetsResourcesReports

Devin

Map Filter

Search by address



County of Clark, Oregon Metro, Bureau of Land Management, State of Oregon

Asset Type	ID	Street	Estimated OCI	Inspected OCI	Criticality Factor
<input type="checkbox"/> Athletic Facility	Elizabeth Park Basketball Court				
<input type="checkbox"/> Park	Elizabeth Park				

Selected 0

Camas Rules:



Alcohol

Alcohol is not permitted. (CMC 9.20.020 and 12.32.140)

Bicycles

Trails are open to bicycles unless otherwise posted. Some restrictions are in place in Lacamas Park. Bicyclists should be aware of other users and use common courtesy on the trail.

Boating

Motorized boats are permitted on Lacamas Lake, the Columbia River, and the lower Washougal River only. Non-motorized boats are allowed on any of the public waterways. (CMC 12.32.080)

Camping

Camping is not permitted. (CMC 12.32.090)

Dogs

Dogs are welcome in all City parks and trails except for Crown Park. Dogs are required to be on a leash eight feet or less in length. (CMC 6.08.140) Dispose of dog waste properly – scoop and carry out. (CMC 6.08.130)

Firearms

Firearms and other code-defined weapons are not allowed in parks or on City property. (CMC 9.28.055 and 12.32.150)

Fires

Campfires and other open-flame fires are not allowed. (CMC 12.32.040)

Fishing

Please contact Washington State Department of Fish and Wildlife for rules and regulations at the Vancouver Regional Office, 696-6211.

Litter

It is illegal to litter. Keep your parks and trails clean. If you pack it in, pack it out. (CMC 9.32.030 and 12.32.160)

Motorized Vehicles

Motorized vehicles are not allowed on the trails. (CMC 12.32.110)

Swimming

Swimming is permitted in designated areas.

Inflatables

Bounce houses and inflatables are not allowed in any of our parks.



Camas signs



Washougal Rules

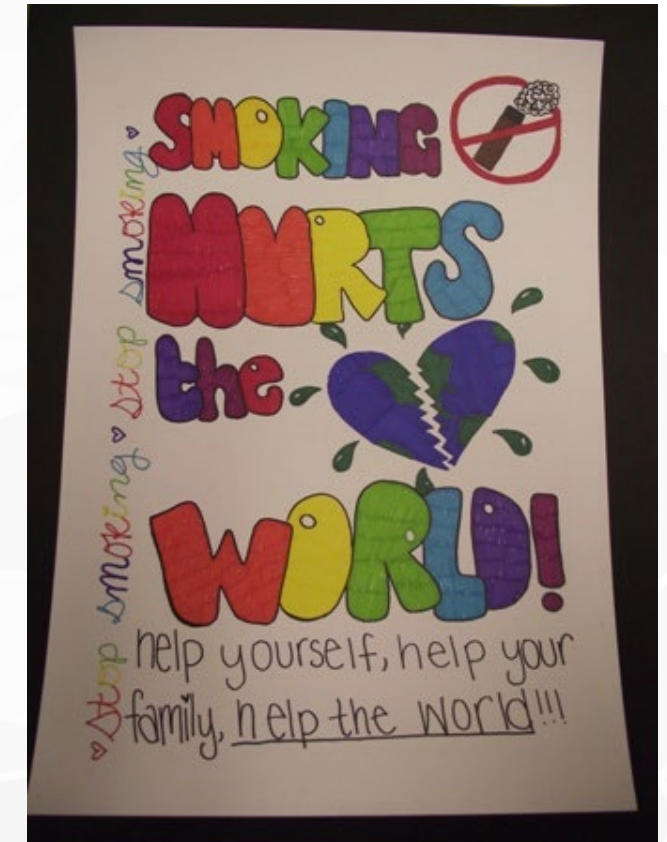


WASHOUGAL CITY PARKS RULES AND REGULATIONS

■ ■ ■ REFERENCE WASHOUGAL MUNICIPAL CODE CHAPTER 2.20 ■ ■ ■

- | | |
|---------------|---|
| HOURS | — PARK OPEN DURING DAYLIGHT HOURS ONLY. |
| DAMAGE | — VANDALS WILL BE PROSECUTED. |
| ANIMALS | — ANIMALS AT LARGE PROHIBITED. OBEY LEASH AND SCOOPER LAWS. |
| FIRES | — ALL BURNING LIMITED TO BBQ AND FIRE PITS ONLY |
| ALCOHOL | — ALCOHOLIC BEVERAGES PROHIBITED |
| POSTING | — POSTING OF SIGNS, NOTICES, AND POSTERS PROHIBITED |
| SWIMMING | — SWIM AT YOUR OWN RISK, NO LIFEGUARD ON DUTY. |
| LOST ARTICLES | — THE CITY OF WASHOUGAL IS NOT RESPONSIBLE FOR
LOST, STOLEN, OR DAMAGED ARTICLES. |
| PENALTY | — VIOLATORS WILL BE DEALT WITH IN ACCORDANCE
WITH EXISTING STATE AND CITY ORDINANCES. |
| GAMES | — Unlawful for any person to practice or play golf, cricket, polo, archery or other games
of like character to hurl or propel any missile. Unless designated for such purpose. |

PET WASTE
TRANSMITS DISEASE
LEASH AND CLEAN
UP AFTER



Smoking Sign ideas

Sand Volleyball

Washougal will be a great place to play beach volleyball since it is near swimmable rivers. Is this something we would like to work with Clark County and the Port with for: William Clark Park, Ninebark, or any others?



Park Foundation



Sand Volleyball Court

The addition of a sand volleyball court in Camas will provide opportunities for east county residents to participate in this popular sport without traveling out of the area. Local players will work with kids to teach them the sport, help maintain the court. They will also coordinate annual tournaments that will bring an economic benefit to Camas along with the recreational benefits.

The volleyball court is adjacent to the Camas/Washougal Skate Park that will utilize the existing parking lot. The parking lot can accommodate groups of players without any upgrades to the facilities.



0%

Raised: \$0

Goal: \$9,100.00

or the donation of 200 cubic yards of sand to build a 12" deep court

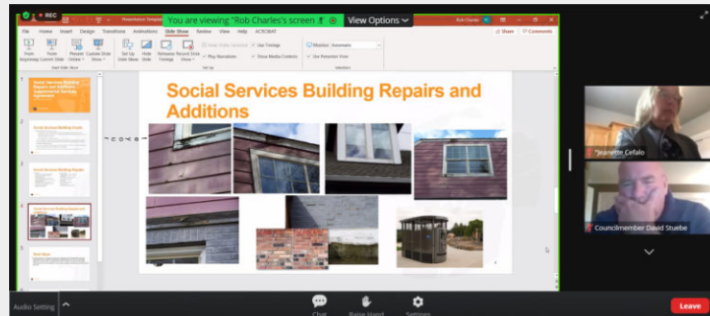
Donate



Facelift for Washougal social services building

City to upgrade facility that houses East County Family Resource Center; add exterior public restroom

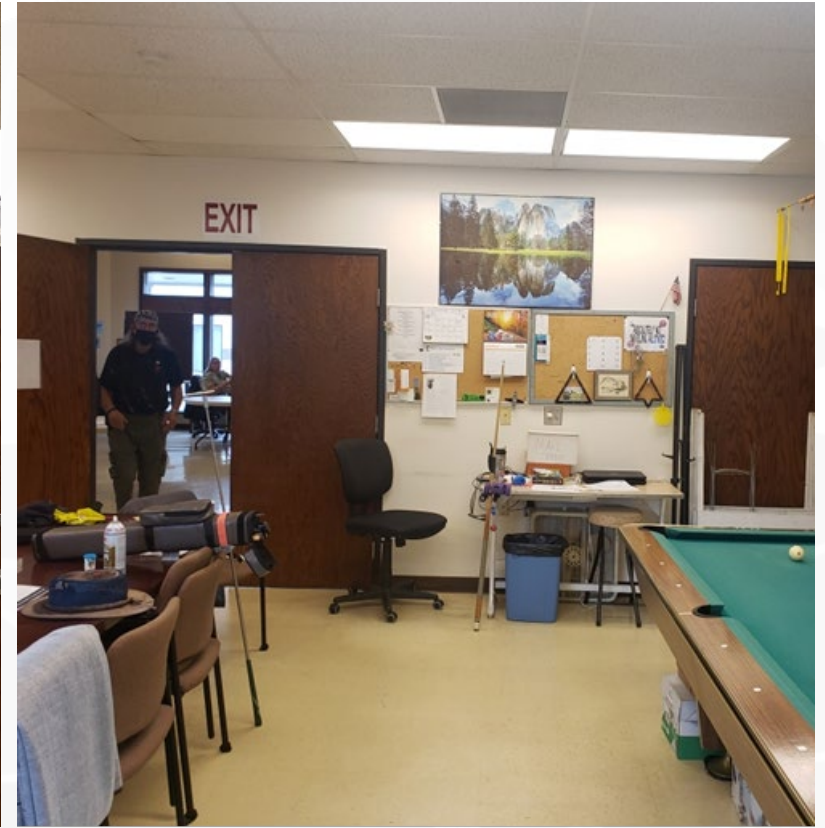
By [Doug Flanagan](#) | October 7, 2021 10:58 am | [comments](#)



Washougal City Council members, including David Stuebe (bottom right), listen to city engineer Rob Charles talk about the city's social services building remodeling project during a remote workshop on Sept. 27, 2021. (Screenshot by Doug Flanagan/Post-Record)

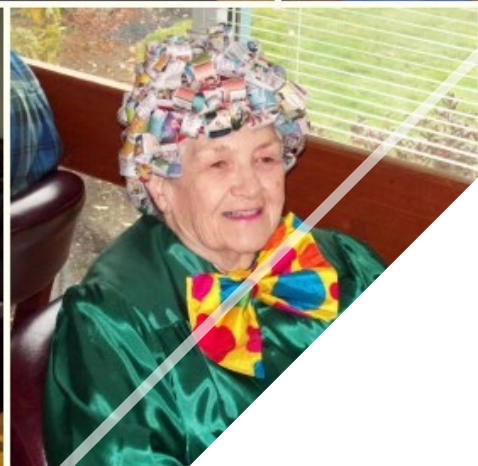


Community Center/Social Service/Seniors

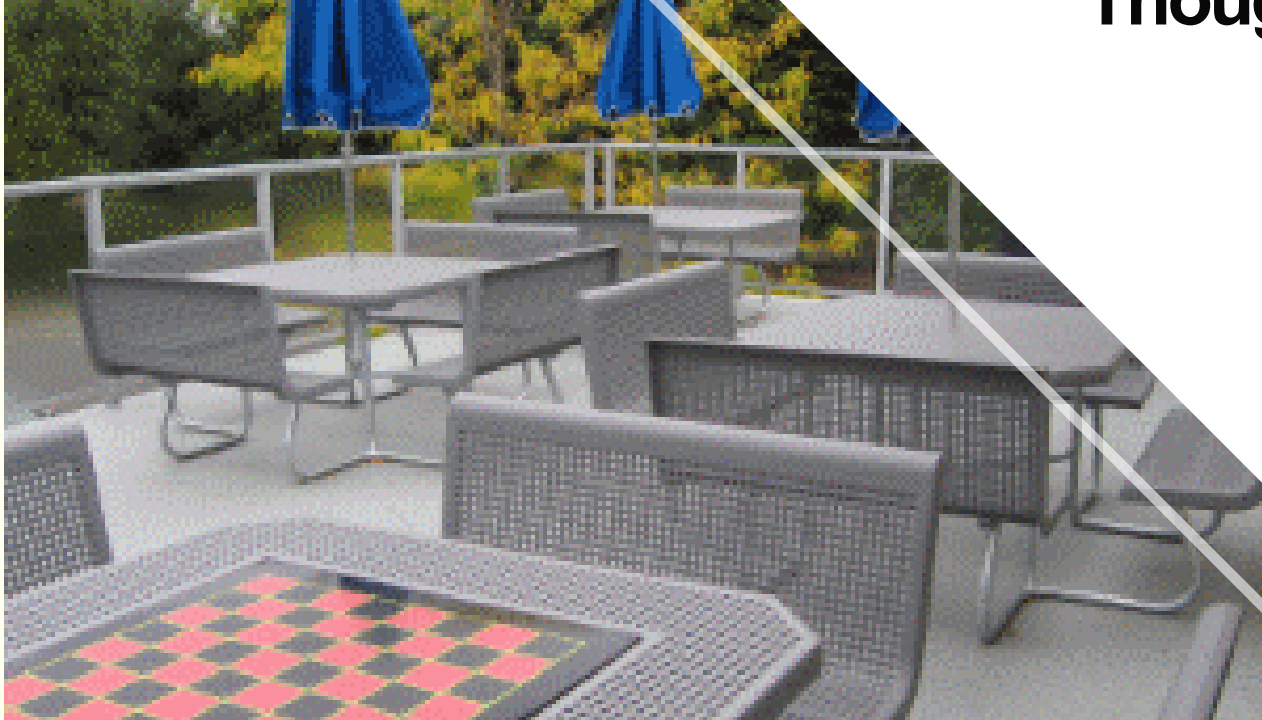


Senior Center





Thoughts??



Disc Golf Update-Sent out information after outreach





Schmid/Steamboat and Campen Bridge

- Schmid Baseball Field – Project completion scheduled for end of November.
- Steamboat Landing – Working with Ballard and WSP on triple pile roller installation and rail repairs.
- Hartwood Bridge - Design started. Design completed in first quarter of 2022.



Kerr Park New Gate





Hamlik



Hamlik Financial Update

Hamlik Park - Engineering Estimate (PHASE I)

Building Clean up	\$3,000	\$8,238
6 picnic tables, 3 benches, garbage's	\$7,000	\$16,238
Baseball dug out	\$5,000	<i>\$10,000</i>
New Playground	\$90,000	\$94,481
1/2 Court Basketball Court	\$17,000	none
Fix Portions of Bike Park	\$5,000	<i>\$5,000</i>
Irrigation for Park	\$5,000	Not going to do
Decommission of playground, dug outs, picnic tables, etc.	\$10,006	<i>\$8,050</i>
	\$142,006	\$142,008

City Portion \$32,000

In-Kind \$10,006

CDBG Grant Request \$100,000

Hamlik Basketball 1/2 Court

Hamlik Park - Engineering Estimate (PHASE II) 1/2 Court Basketball

Stormwater, Engineering, archeological study	\$9,000
ADA Sidewalks	\$9,000
Basketball Court and construction	\$35,000
Basketball Hoop and paint	\$10,000
TOTAL	\$56,000

City Portion	\$6,000
CDBG Grant Request	\$50,000



Hamllik Pile of Dirt



**Bench and Picnic Table
Replacement**



**Bench and Picnic Table
Replacement-Before and
After**





Baseball dug out repair



Restroom-Outside Cleanup





Playground (23 years old) \$90,000



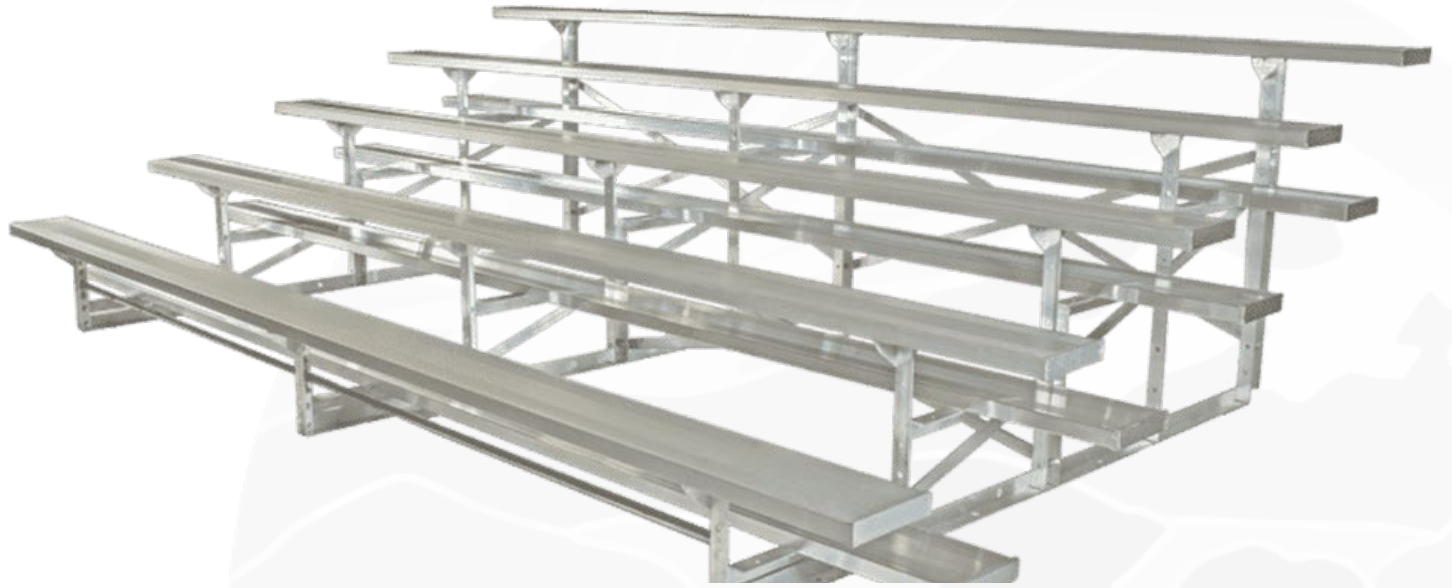


Restroom-Inside Cleanup





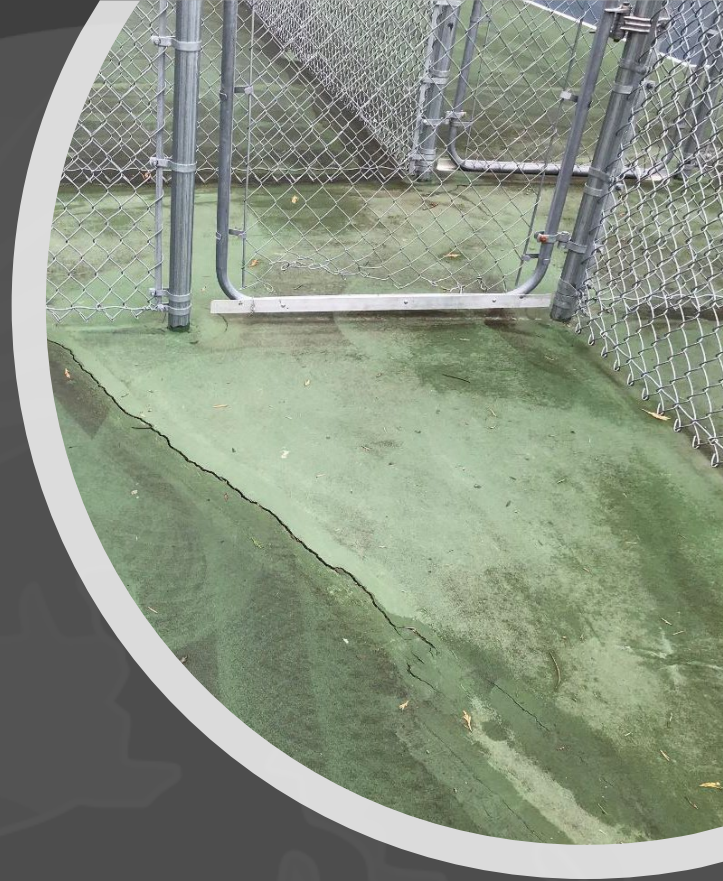
$\frac{1}{2}$ Basketball Court



Replace Lower Hathaway Bleachers



City of Washougal



**Hathaway Pickleball Court
resurfacing contract will possible
be signed on Tuesday. Work will
be spring of 2022.**





Keeping Hathaway Basketball Court



City of Washougal

Thank you and any questions!!



City of Washougal